

“SOMETIMES BETTER IS SIMPLY BETTER”

**AmCraft**

**OUR QUALITY vs. THE COMPETITION**



## Table of Contents

Heavy Duty Webbing .....	3
Lock Stitch .....	6
Welded Seams .....	7
Velcro Secured .....	10
Reinforced Edge.....	11

## OUR QUALITY

If it's important to you that your industrial curtain wall is constructed with high quality craftsmanship with a keen focus on the details that support long term durability, then contact AmCraft Manufacturing today.

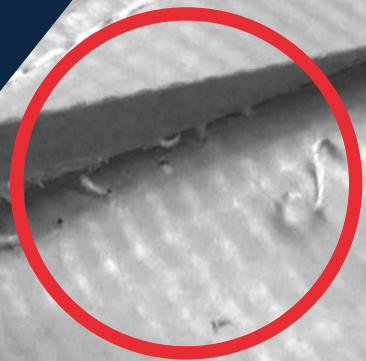
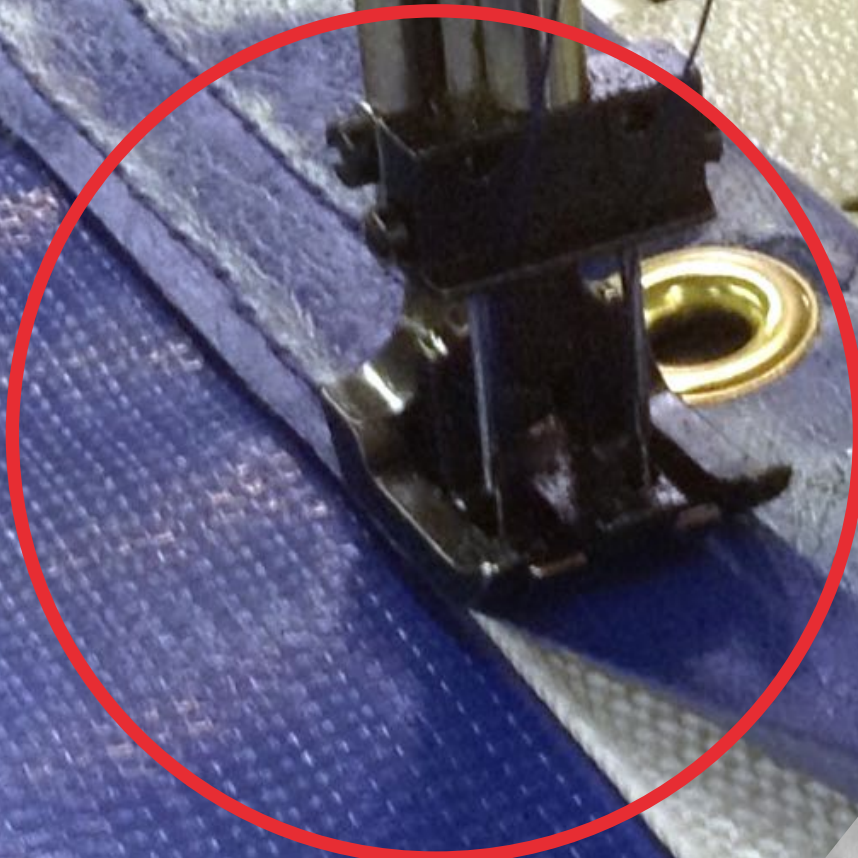
We will work with you on price and lead time.



# AmCraft's Heavy Duty Webbing vs. Competition's No Webbing

Reinforced Top Hem with 1" or 2" wide heavy duty webbing to prevent the grommets from tearing out of the top over time.

Webbing vs. No Webbing

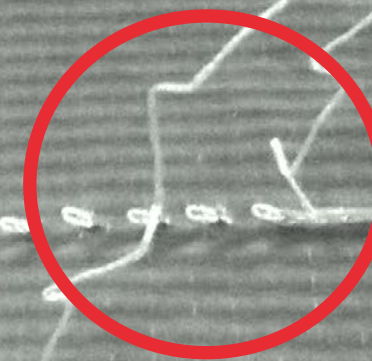




# AmCraft's Lock Stitch vs. Competition's Chain Stitch

## Lock Stitch vs. Chain Stitch

The competition uses one thread for both the top and bottom thread lines. Unfortunately, if one stitch tears, then the whole row can come undone. AmCraft's lock stitch method produces a tighter, more secure stitch line ensuring both rows of stitches are fail safe and remain intact.

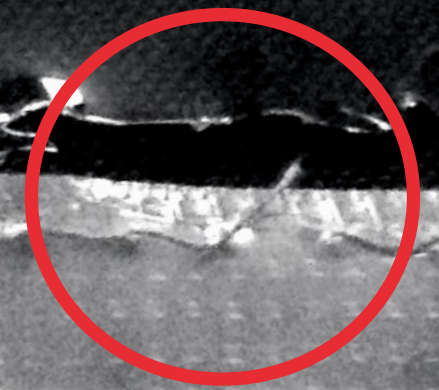




# AmCraft's RF Welded Seam vs. Competition's Easily Torn Seam

The competition's stitching perforates the material and creates the possibility of tearing over time and use. AmCraft utilizes radio frequency to produce welded seams that are waterproof and prevents tearing.

Welded Seam vs.  
Easily-Torn Seam

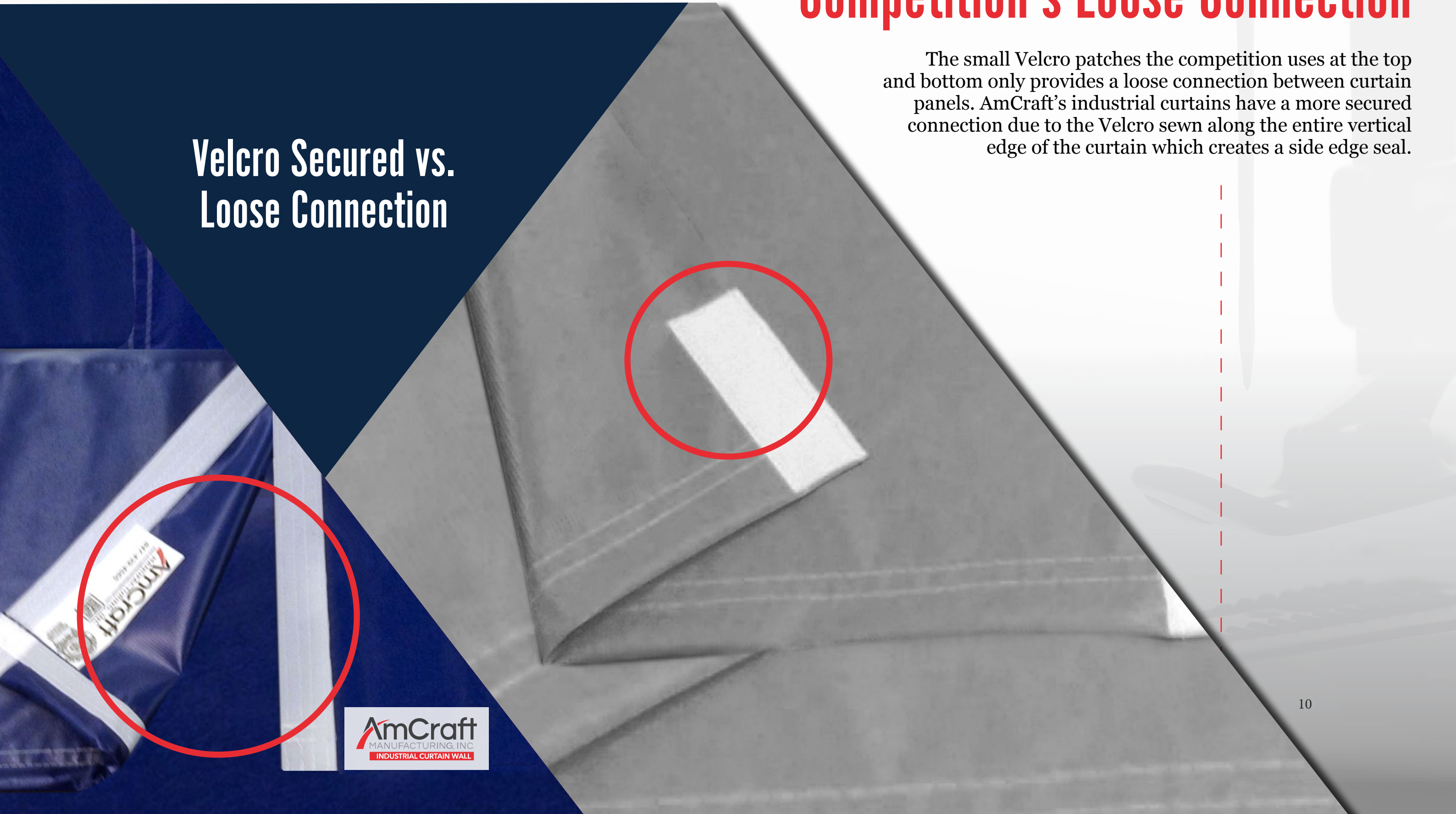




# AmCraft's Secured Connection vs. Competition's Loose Connection

The small Velcro patches the competition uses at the top and bottom only provides a loose connection between curtain panels. AmCraft's industrial curtains have a more secured connection due to the Velcro sewn along the entire vertical edge of the curtain which creates a side edge seal.

## Velcro Secured vs. Loose Connection

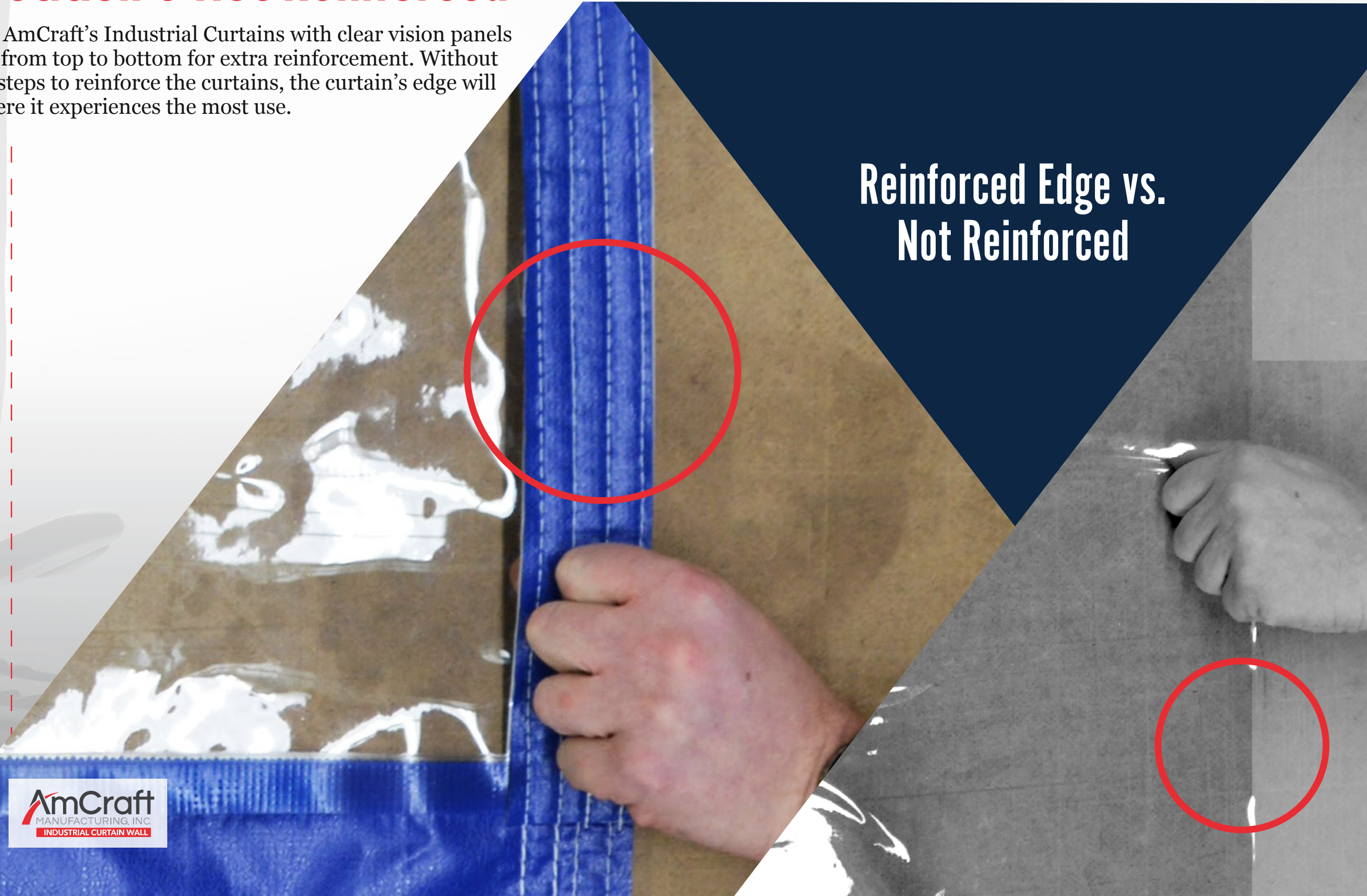




# AmCraft's Reinforced Edge vs. Competition's Not Reinforced

All vertical edges of AmCraft's Industrial Curtains with clear vision panels have Vinyl sewn on from top to bottom for extra reinforcement. Without taking these added steps to reinforce the curtains, the curtain's edge will pull and stretch where it experiences the most use.

Reinforced Edge vs.  
Not Reinforced





# TOP 3 REASONS

Why customers order industrial curtain walls from AmCraft Manufacturing:

**BETTER QUALITY**

**BETTER CRAFTSMANSHIP**

**BETTER SERVICE**

*“Sometimes Better Is Simply Better”*

**ORDER NOW**



[sales@amcraftonline.com](mailto:sales@amcraftonline.com)



[www.AmCraftIndustrialCurtainWall.com](http://www.AmCraftIndustrialCurtainWall.com)



847.439.4565